

Connecting to SQL Server Databases

A  Skillwave Product
with content from

www.excelguru.ca

© Skillwave Training



The 'Loaded Pencil' Database

Our Demo Database:

- Hosted in SQL Azure
- Based on real food & beverage sales for a restaurant
- Contains defined relationships within the SQL database
- Includes 348,880 transactions spanning from 2009-01-01 through 2013-12-31
- Holds monthly budgets by sales category



Key Industry Specific Terminology

- 'POS' = "Point of Sale"
- 'Chit' = Transaction



Even though this is SQL Azure, the connection experience is similar in all databases

© Skillwave Training

'Loaded Pencil' Relational Database Diagram



© Skillwave Training

Connecting to the Database

Connecting:

1. Choose connector (Azure SQL)
2. Enter location and database

For first time connections:

3. Choose Authentication Method
4. Enter credentials
5. Select scope of credentials
6. Connect

The screenshot shows the 'SQL Server database' connection dialog box. The steps are numbered as follows:

- 3**: Select 'Database' as the authentication method.
- 4**: Enter 'Skillwave' as the User name.
- 5**: Select the scope of credentials from the dropdown menu, choosing 'xlgdemos.database.windows.net/LoadedPencil'.
- 6**: Click the 'Connect' button.



Credentials are on the bottom of the lesson page and may not match what is shown in the video!

© Skillwave Training

Troubleshooting

Authentication Issues?

Managing Credentials

Go to Data Source Settings
Filter for your Data Source
Choose Edit (or Clear)

Common issues

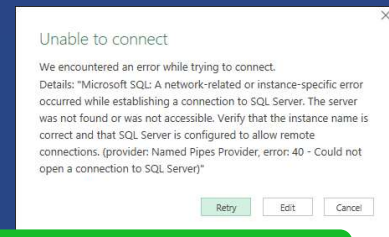
Mis-spelled components
Trailing spaces on copy/paste
Incorrect account type

Unable to Connect?

Incorrect URL

Firewall issues

DB Offline



The most likely reason you can't connect to our database is your firewall blocking services

© Skillwave Training

Extracting Data – You Have Options!

Single Table



Select Table
Click Transform Data

Multiple Tables



Check Multiple Items checkbox
Select Tables
Click Transform Data

Multiple Tables via a Single 'Staging' Query



1. Right click the database -> Transform Data
2. Right click the query -> Reference
3. Drill into the desired table
4. Repeat steps 2-3 for each table you need

© Skillwave Training