

## The 'Get Data' Experience

Understanding the Power Query UX



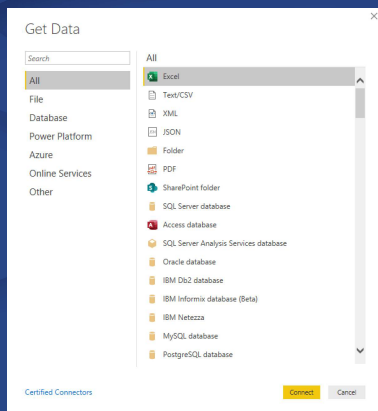
© Skillwave Training



1

## How do Things Flow in Power Query?

Where do things start and where do they finish?



Desired Output

© Skillwave Training

2

# Power Query Academy

1

From WooCommerce.Contents

The https url of your WooCommerce site

Example: <https://www.poweredsolutions.co>

Choose your API version

v1

v2

v3

OK

Cancel

2

WooCommerce

API Credentials

["siteurl":"https://www.powerquery.training/", "api...

Consumer Key

Consumer Secret

Save

Cancel

3

Navigator

Subscriptions

parent\_id

status

order\_key

number

currency

OK

Cancel

4

Power Query Editor

Subscriptions

parent\_id

status

order\_key

number

currency

OK

Cancel

© Skillwave Training

3



4



## 1. Connector Parameters

© Skillwave Training

5

## Types of Parameters Available

Dialog box titled "Hello - Name" showing various parameter types:

- Message (Text): Example: Hello world
- Count (Number): Example: 123
- myDate (Date): Example: 3/21/2012
- myLogical (Boolean): Example: true
- myDropdown (List): Options: A, B, C, D

A calendar is shown for the date parameter, displaying September 2019.

Simple textbox with data validation to only accept text

Simple textbox with data validation to only accept numbers

Simple textbox with data validation to only accept dates

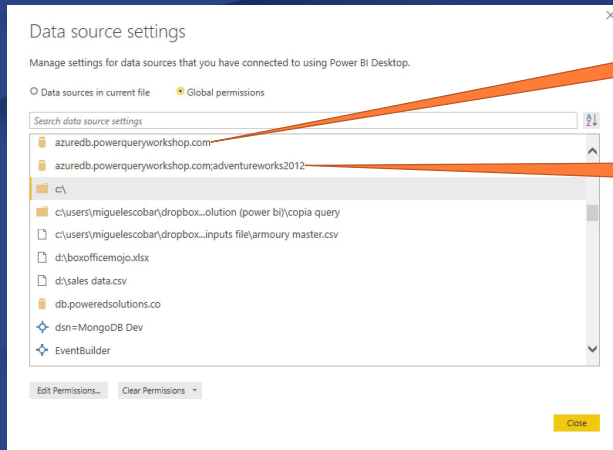
Simple textbox with data validation to only accept true/false

Modified textbox with a list of "Allowed values" to select from

© Skillwave Training

6

## The Data Source Path



Connection defined at the server level

Connection defined at the database level

Parameters defined create the Data Source Path

A way to distinguish connections to a single data source

© Skillwave Training

7

## Singleton Connectors

Connectors that do not require parameters

Only one Data Source Path available per environment

These go straight into the Connector Authentication Phase



Adobe Analytics



Google Analytics

© Skillwave Training

8



## 2. Connector Authentication

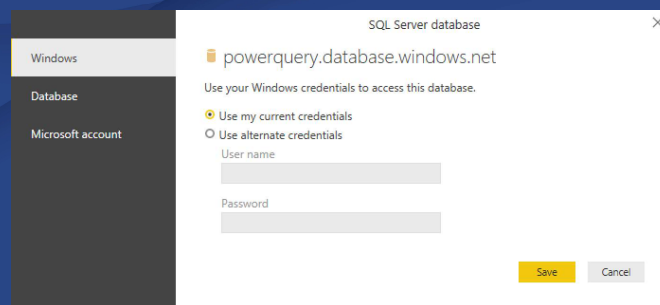
© Skillwave Training

9

### About the Authentication Phase

Power Query will try to establish a secure connection to the data source

Authentication methods vary from connector to connector



© Skillwave Training

10

## Authentication Methods

### Anonymous

Commonly used when connecting to a Web Page

### Basic

Accepts a **username** and **password** to be sent in base64 encoding

### API Key

Accepts a single API Key for authentication

### Organizational account

Also known as **OAuth 2.0**

Examples: Salesforce, Google Analytics, SharePoint Online

### Windows

Can be implicit or explicit

Examples: Local Files such as Excel files (implicit), SQL Database (explicit Windows credentials)

### Database

Only available in some connectors specific to databases

Examples: SQL Database, Oracle Database, MySQL Database, etc.

© Skillwave Training

11



## 3. Navigation Table

© Skillwave Training

12

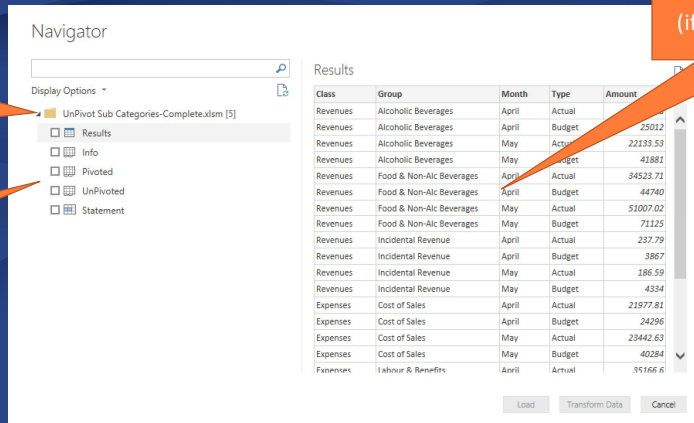
# Power Query Academy

## Navigator or Navigation Table

Root view, or top level of the tree (displays the data source path)

Available objects from the data source

Preview window (if an object is selected)



User-friendly way to display the objects available to us from our data source

© Skillwave Training

13

The screenshot illustrates the Folder connector setup. On the left, there is a 'Folder' dialog box with a 'Folder path' field and a 'Browse...' button. A yellow arrow points from this dialog to a preview window on the right. The preview window shows a list of files and folders in a table format with columns: 'Content', 'Name', 'Extension', 'Date accessed', 'Date modified', 'Date created', and 'AI'. The files are listed as 'Binary'. At the bottom of the preview window, there is a message: 'The data in the preview has been truncated due to size limits.' and buttons: 'Combine & Transform Data', 'Transform Data', and 'Cancel'.

Some connectors go straight from one phase to the last (Example above is for the Folder connector)

© Skillwave Training

14

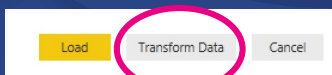


## 4. Output Query

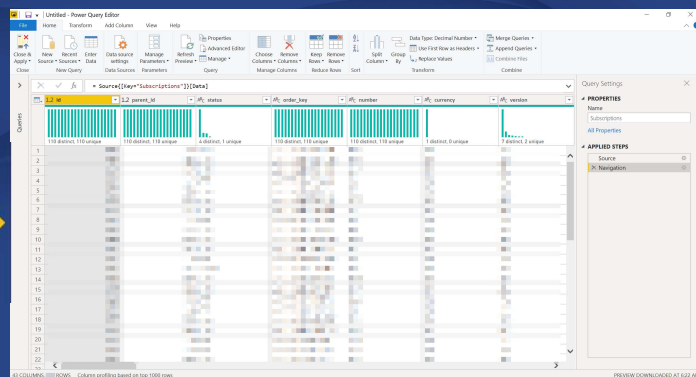
© Skillwave Training

15

## Output Query – Where to Load?



Power Query options



Power Query window after selecting the “Transform Data” option

Power Query will always give us the option to either **“Load”** or **“Transform Data” / “Edit Query”**

© Skillwave Training

16



# Power Query Academy

1

From WooCommerce.Contents

The https url of your WooCommerce site  
*Example: https://www.poweredolutions.co*

Choose your API version

v1  
v2  
v3

OK Cancel

2

WooCommerce

API Credentials

["siteurl": "https://www.powerquery.training/v", "api..."]

Consumer Key

Consumer Secret

Save Cancel

3

Navigator

Subscriptions

Preview downloaded on Tuesday

Display Options

Orders  
Subscriptions  
Orders/Products

Subscriptions

OK Cancel

4

Power Query Editor

Subscriptions

Columns: id, name, status, order\_id, number, currency

OK Cancel