

SQL Databases With Defined Relationships

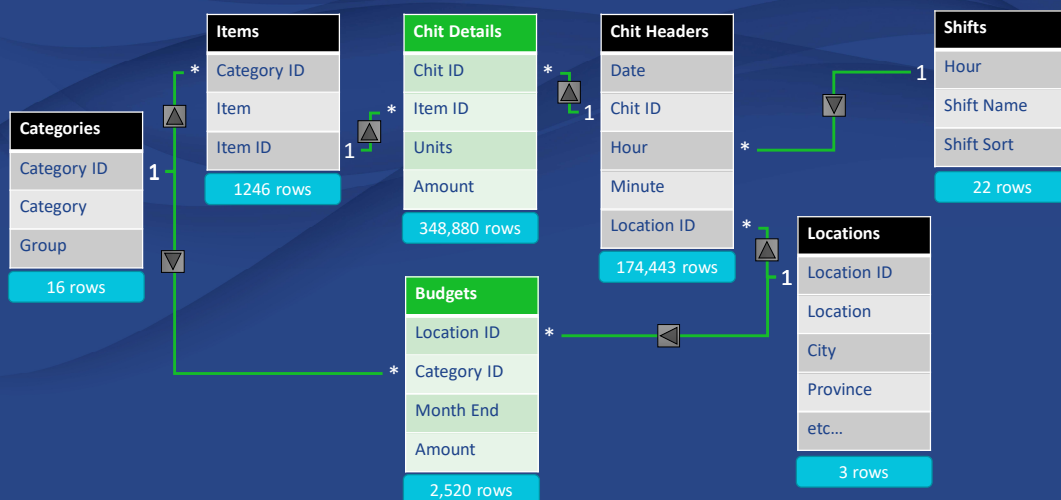
A **Skillwave** Product
with content from



© Skillwave Training

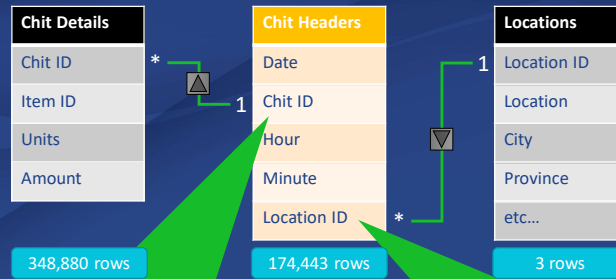


'Loaded Pencil' Relational Database Diagram



© Skillwave Training

Power Query Understands Relationships...



One ChitID in the Chit Headers table can be related to many records in the Chit Details table.

Related records manifest as **Tables** in Power Query.

Each of the many LocationIDs in the Chit Headers table can only relate to one record in Locations.

Related records manifest as **Values** in Power Query.

© Skillwave Training

The Goal of our Demo

Create this PivotTable:

The problem?

Generate a single data table
Data comes from 4 tables

Locations

Shifts

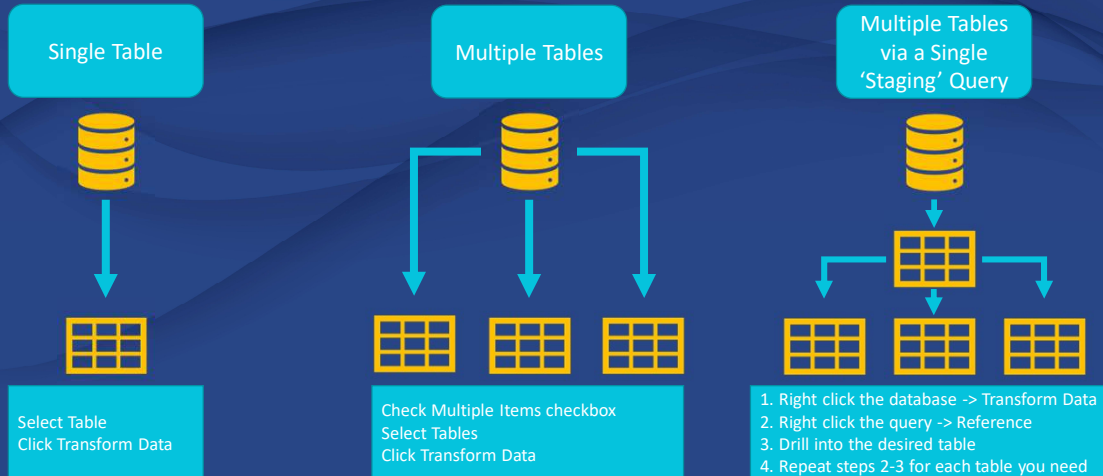
Chit Headers

Revenue	2009	2010	2011	2012	2013	Grand Total
Ethical Development	2,516,996	3,684,923	2,161,444	3,318,806	3,709,821	15,391,990
Afternoon	456,888	1,302,988	489,914	968,856	890,432	4,109,079
Breakfast	442,098	141,084	142,457	661,520	264,698	1,651,856
Dinner	327,100	1,321,127	639,050	555,116	529,351	3,371,743
Late Night	330,086	430,451	546,058	160,962	320,703	1,788,260
Lunch	960,824	489,274	343,965	972,352	1,704,637	4,471,051
Tax Evader	2,329,685	1,404,735	4,750,478	2,263,396	5,608,827	16,357,120
Afternoon	436,709	378,982	550,417	159,174	796,521	2,321,803
Breakfast	371,233	128,942	1,290,165	586,978	427,692	2,805,009
Dinner	410,018	447,313	250,101	430,404	1,587,469	3,125,305
Late Night	357,614	66,180	174,014	440,718	193,200	1,231,726
Lunch	754,111	383,318	2,485,779	646,122	2,603,945	6,873,276
The Squintz	3,284,624	4,167,133	3,384,724	3,038,223	2,995,540	16,870,244
Afternoon	911,916	316,937	282,204	342,115	437,522	2,290,694
Breakfast	326,657	342,800	41,715	1,321,193	199,500	2,231,864
Dinner	1,181,537	1,607,462	1,921,549	599,264	457,706	5,767,517
Late Night	363,153	783,657	208,409	133,206	87,329	1,575,754
Lunch	501,360	1,116,277	930,849	642,445	1,813,483	5,004,415
Grand Total	8,131,304	9,256,790	10,296,646	8,104,425	12,314,188	48,619,354

Chit Details (Units * Amount)

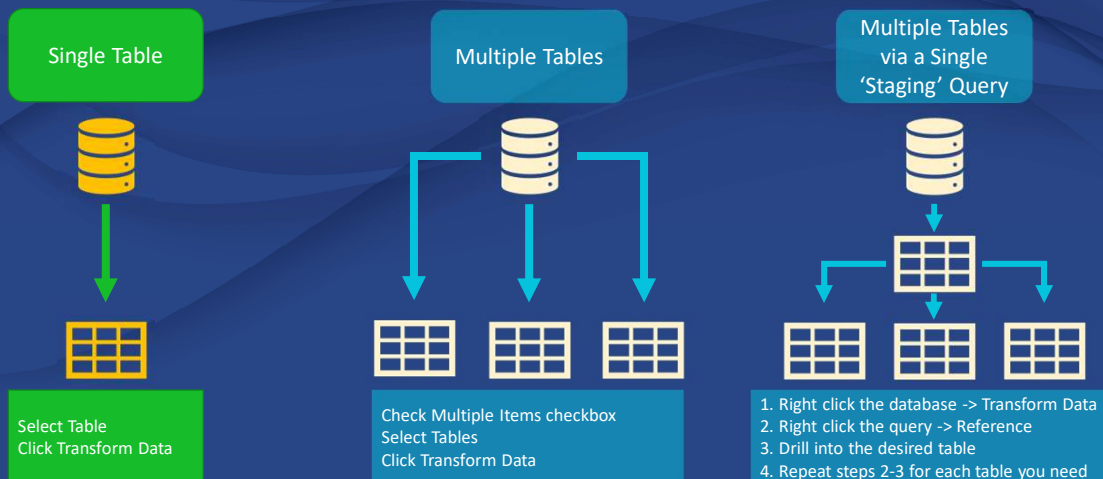
© Skillwave Training

While Any of These Methods Would Work...



© Skillwave Training

We will get all our data via a Single Table...



© Skillwave Training